

2024

LASER LEVEL AUTO LEVEL

High precision level
Professional manufacturing factory



SHROBOLL®

宁波舜邦测绘科技有限公司
NingBo ShroBoll Surverying&Mapping Technology CO.,LTD.
TEL : +86-574-6250 3996 FAX : +86-574-6253 0049
E-mail : ghdong@shroboll.com
[http:// www.shrobolllaser.com](http://www.shrobolllaser.com)



SHROBOLL®
舜 邦 科 技



COMPANY PROFILE

Ningbo ShroBoll Surveying&Mapping Technology Co., Ltd. is established in 2009, and specializes in laser level instrument , auto level , ultra-precision gear and other related products.

We have an excellent team of engineers , a high-efficient management team and skilled workers. Our company has passed the ISO 9001:2015, and have more than 40 patents. One of our major visions is to bring new creative products to our customers continuously.

All products are selling to US, Europe, Japan, Russia, Korea, South Asia and China etc. And we have established a long-term cooperative partnership with international famous company.

Hand in hand
Create the future together

2021

Rename to SHROBOLL
step into a new development stage

2018

Invest high precision mould
project(accuracy of manufacturing 0.2um)

2014

Through the ISO9001 international quality
management system certification

2009

Ningbo Sunny Surveying &
Mapping Technological
Co.,Ltd was established

2003

Line laser project
was introduced in
surveying &mapping department

1998

First leveling instrument
project was introduced in

TIMELINE

SHROBOLL®

MANUFACTURING PROCESS

■ MANUFACTURING

Our company has more than 76 sets of Ultra-precision machines, such as Moore 500 CPWZ precision jig grinder, MAKINO IQ300, OKAMOTO precision surface grinder, GF AgieCharmilles slow-feeding wire cut machine, BEIJING JINGDIAO mold processing machine, MITUTOYO checkout equipment, TOSHIBA UVM450D ,ULC100D, Sumitomo Mitsui and Fanuc Injection molding machine etc.

The products processing accuracy reaches micron level, we can design and manufacture ultra-precision die and precision parts according to the needs of different customers



AUTO LEVEL

SHROBOLL auto level series is designed for building construction and precision levelling



- ◆ Auto level
- ◆ Magnetic damping system laser level
- ◆ Electronic system laser level

LASER LEVEL

SHROBOLL specializes in producing various types of laser level instrument with high precision, high quality, and does OEM production for different companies



LCG-A85 / LCG-085

Line laser level

NEW



Fine Adjust center of rotation
Fine Adjust $\pm 5^\circ$

Power supply:
12V Battery pack



LCG-A85



Electronic

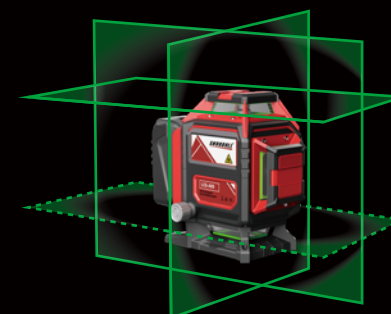
LCG-085



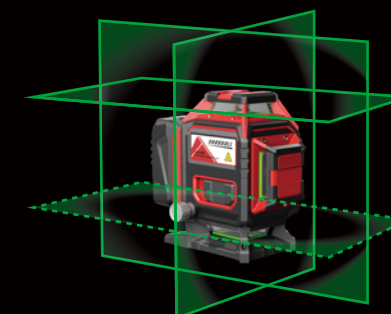
- Projection: two 360° horizontal and two 360° vertical lines, can be individually switched on and off
- Type of laser: green laser diode 520nm
- Output: CLASS II
- Levelling: electronic system
- Self-levelling range: $\pm 4^\circ$
- Accuracy: $\pm 2\text{mm}/10\text{m}$
- Power supply: 12V Li-battery
- Tripod connection size: 1/4" and 5/8"
- With tilt lock function
- Has micro-adjusting function

- Projection: two 360° horizontal and two 360° vertical lines, can be individually switched on and off
- Type of laser: green laser diode 520nm
- Output: CLASS II
- Levelling: magnetic damping
- Self-levelling range: $\pm 4^\circ$
- Accuracy: $\pm 3\text{mm}/10\text{m}$
- Power supply: 12V Li-battery
- Tripod connection size: 1/4" and 5/8"
- With tilt lock function
- Has micro-adjusting function

LCG-A85:



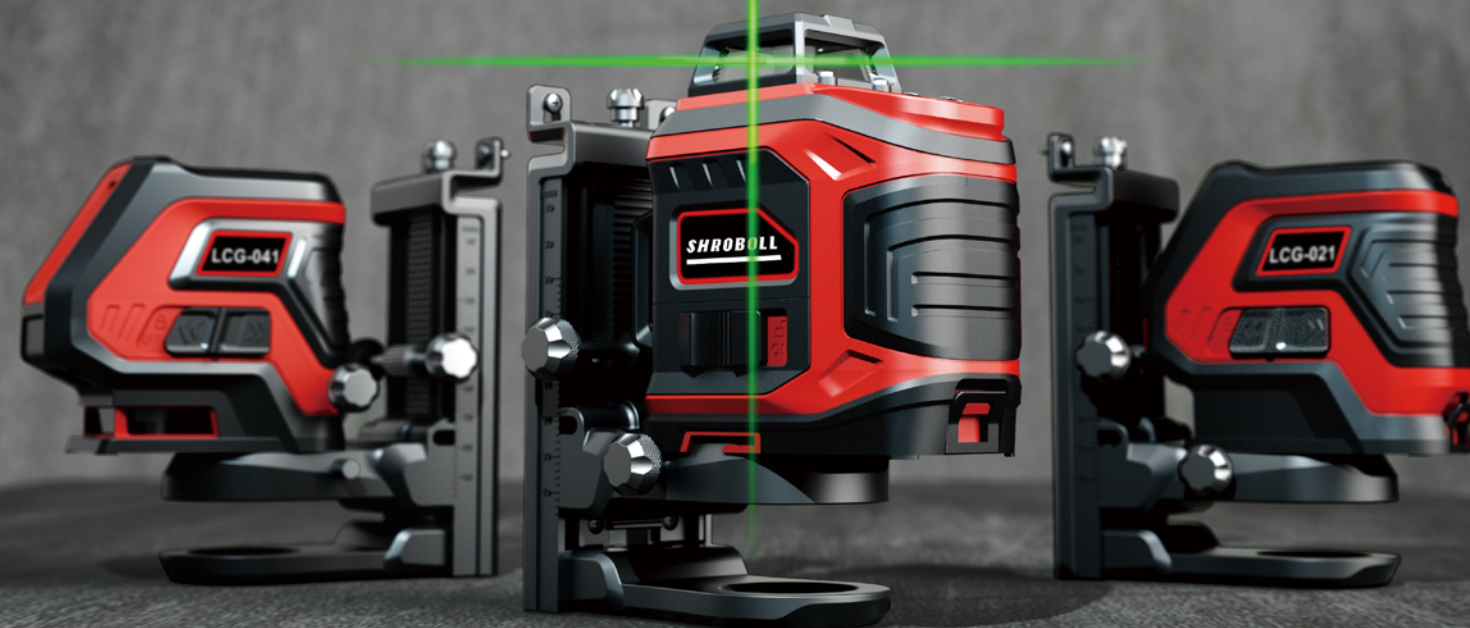
LCG-085:



LCG-021 / LCG-031 / LCG-041/LCG-061

Line laser level

NEW

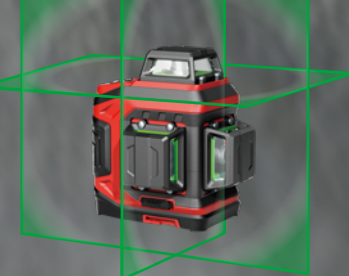


LCG-021:

LCG-031:

LCG-041:

LCG-061:



LCG-021



- Projection: 135°horizontal line and135°vertical line
- Type of laser:green laser diode 520nm, red laser diode 635nm
- Output: CLASS II
- Levelling:magnetic damping
- Self-levelling range:±3°
- Accuracy:±2mm/10m
- Power supply:3 AA batteries or Li-battery
- Tripod connection size: 1/4"
- With tilt lock function

LCG-031



- Protection(LCG-031):200°horizontal line,135°vertical line
Projection(LCG-041): 200°horizontal line,135°vertical line and two dots
- Type of laser:green laser diode 520nm, red laser diode 635nm
- Output: CLASS II
- Levelling:magnetic damping
- Self-levelling range:±3°
- Accuracy:±2mm/10m
- Power supply:3 AA batteries or Li-battery
- Tripod connection size: 1/4"
- With tilt lock function

LCG-041

LCG-061



- Projection: one 360° horizontal and two 360° vertical lines, can be individually switched on and off
- Type of laser:green laser diode 520nm
- Output: CLASS II
- Levelling:magnetic damping
- Self-levelling range:±3.5°
- Accuracy:±3mm/10m
- Power supply:3 AA batteries or Li-battery
- Tripod connection size: 1/4"
- With tilt lock function
- Has micro-adjusting function by using turning table

KL-P3



- Projection: 3dots, up and down and front three green laser dots
- Type of laser:green laser diode 520nm
- Output: CLASS II
- Levelling:magnetic damping
- Self-levelling range:±4°
- Accuracy:±3mm/10m
- Power supply:3AA batteries or Li-battery
- Tripod connection size: 1/4"

KL-P42



- Projection: 2 lineres,4 dots
- Type of laser:green laser diode 520nm
- Output: CLASS II
- Levelling:magnetic damping
- Self-levelling range:±4°
- Accuracy:Liner:±2mm/10m, Dots: +3mm/10m
- Power supply:3AA batteries or Li-battery
- Tripod connection size: 1/4"

KL-P5



- Projection: 5dots,up and down and front and right and left five green laser dots
- Type of laser:green laser diode 520nm
- Output: CLASS II
- Levelling:magnetic damping
- Self-levelling range:±4°
- Accuracy:±3mm/10m
- Power supply:3AA batteries or Li-battery
- Tripod connection size: 1/4"



KL-P3:



KL-P42:



KL-P5:



LP-03G / LP-05G / LP-11G

Line laser level

LP-03G



- Projection: 3dots, up and down and front three green laser dots
- Type of laser:green laser diode 520nm
- Output: CLASS II
- Levelling:magnetic damping
- Self-levelling range:±4°
- Accuracy:±3mm/10m
- Power supply:one 18650 Li-battery
- Tripod connection size: 1/4"

LP-05G



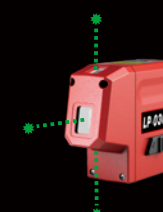
- Projection: 5dots,up and down and front and right and left five green laser dots
- Type of laser:green laser diode 520nm
- Output: CLASS II
- Levelling:magnetic damping
- Self-levelling range:±4°
- Accuracy:±3mm/10m
- Power supply:one 18650 Li-battery
- Tripod connection size: 1/4"

LP-11G

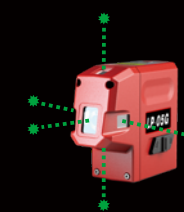


- Projection: 200°horizontal line,135°vertical line
- Type of laser:green laser diode 520nm
- Output: CLASS II
- Levelling:magnetic damping
- Self-levelling range:±4°
- Accuracy:±2mm/10m
- Power supply:one 18650 Li-battery
- Tripod connection size: 1/4"
- With tilt lock function

LP-03G:



LP-05G:



LP-11G



ZLL-54G / ZLL-40G
ZLL-30G / ZLL-31G
Line laser level

NEW



ZLL-54G:



ZLL-40G:



ZLL-30G:
ZLL-31G:



ZLL-54G



- Projection: two 360° vertical lines and two 360° horizontal line
- Type of laser: green laser diode 520nm
- Output: CLASS II
- Levelling: magnetic damping
- Self-levelling range: $\pm 3.5^\circ$
- Accuracy: $\pm 3\text{mm}/10\text{m}$
- Power supply: Li-battery
- Tripod connection size: 1/4"
- With tilt lock function

ZLL-40G



- Projection: one 360° horizontal line and one 145° vertical line
- Type of laser: green laser diode 520nm
- Output: CLASS II
- Levelling: magnetic damping
- Self-levelling range: $\pm 3.5^\circ$
- Accuracy: $\pm 2.5\text{mm}/10\text{m}$
- Power supply: 3 AA batteries
- Tripod connection size: 1/4"
- With tilt lock function
- Long operating time, up to 9 hours



ZLL-30G

ZLL-31G

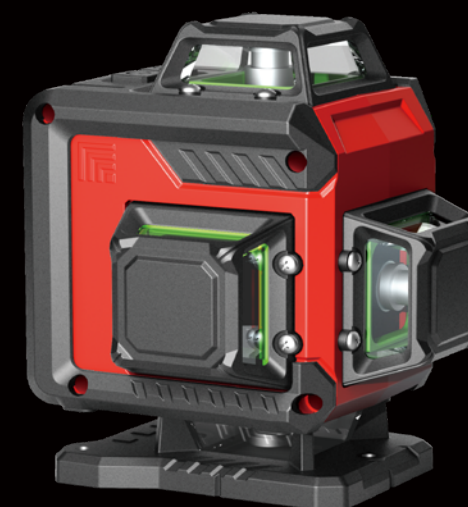


- Protection (ZLL-30G): one cross line laser
Protection (ZLL-31G): one vertical line, one horizontal line
- Type of laser: green laser diode 520nm
- Output: CLASS II
- Levelling: magnetic damping
- Self-levelling range: $\pm 3.5^\circ$
- Accuracy: $\pm 3\text{mm}/10\text{m}$
- Power supply: 3 AA batteries
- Tripod connection size: 1/4"
- With tilt lock function



LC-4D / LC-3DT
LC-3D / LC-2V
Line laser level

LC-4D



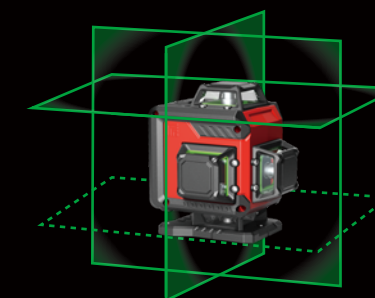
- Projection: two 360° horizontal lines and two 360° vertical laser lines
- Type of laser: green laser diode 520nm
- Output: CLASS II
- Levelling: magnetic damping
- Self-levelling range: $\pm 4^\circ$
- Accuracy: $\pm 3\text{mm}/10\text{m}$
- Power supply: 4pcs AA batteries or Li-battery
- Tripod connection size: 1/4"
- With tilt lock function

LC-3DT

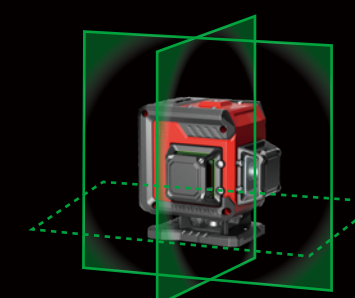


- Projection: two 360° vertical lines and one 360° horizontal line
- Type of laser: green laser diode 520nm
- Output: CLASS II
- Levelling: magnetic damping
- Self-levelling range: $\pm 4^\circ$
- Accuracy: $\pm 3\text{mm}/10\text{m}$
- Power supply: 4pcs AA batteries or Li-battery
- Tripod connection size: 1/4"
- With tilt lock function

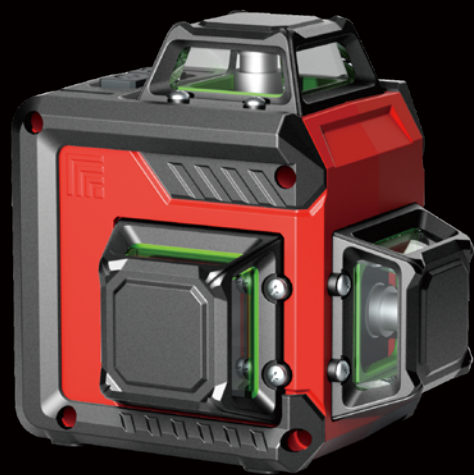
LC-4D:



LC-3DT:

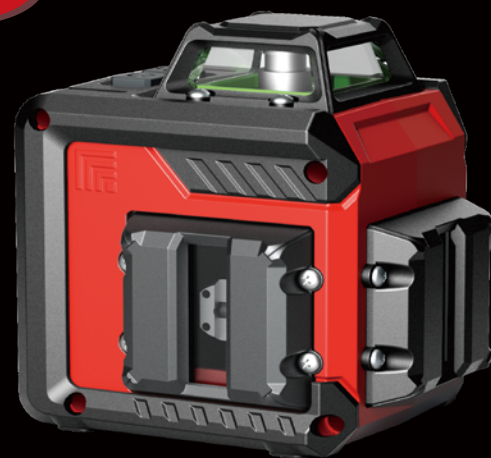


LC-3D



- Projection: one 360° horizontal and two 360° vertical lines
- Type of laser: green laser diode 520nm
- Output: CLASS II
- Levelling: magnetic damping
- Self-levelling range: $\pm 4^\circ$
- Accuracy: $\pm 3\text{mm}/10\text{m}$
- Power supply: 4pcs AA batteries or Li-battery
- Tripod connection size: 1/4"
- With tilt lock function

LC-2V

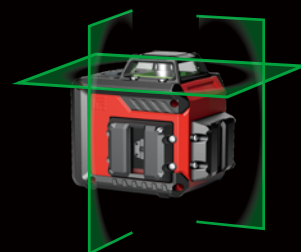


- Projection: one 360° horizontal line and two vertical lines
- Type of laser: green laser diode 520nm
- Output: CLASS II
- Levelling: magnetic damping
- Self-levelling range: $\pm 4^\circ$
- Accuracy: $\pm 3\text{mm}/10\text{m}$
- Power supply: 4pcs AA batteries or Li-battery
- Tripod connection size: 1/4"
- With tilt lock function

LC-3D:



LC-2V:



ALP-98G / ALP-88G ALP-90G / LP-706G Line laser level



LP-706G

Laser-liner level

- Projection: four vertical, one horizontal lines with one down dot
- Type of laser: green laser diode 520nm, red laser diode 650nm
- Output: CLASS II
- Levelling: magnetic damping
- Self-levelling range: $\pm 3^\circ$
- Accuracy: $\pm 2\text{mm}/10\text{m}$
- Power supply: Li-battery or 4pcs AA batteries
- Tripod connection size: 5/8"



LP-706G:



ALP-88G

Laser-liner level

- Projection: four vertical, four horizontal lines and one down dot
- Type of laser: green laser diode 520nm, red laser diode 650nm
- Output: CLASS II
- Levelling: electronic automatic level
- Self-levelling range: $\pm 4^\circ$
- Accuracy: $\pm 2\text{mm}/10\text{m}$
- Power supply: Li-battery or 4pcs AA batteries
- Tripod connection size: 5/8"
- With tilt lock function



ALP-88G:



ALP-90G

Laser-liner level

- Projection: four vertical, four horizontal lines and one down dot
- Type of laser: green laser diode 520nm, red laser diode 650nm
- Output: CLASS II
- Levelling: electronic automatic level
- Self-levelling range: $\pm 4^\circ$
- Accuracy: $\pm 2\text{mm}/10\text{m}$
- Power supply: 2pcs 18650
- Tripod connection size: 5/8"
- With tilt lock function



ALP90:



ALP-98G

Laser-liner level

- Projection: four vertical, four horizontal lines and one down dot
- Type of laser: green laser diode 520nm, red laser diode 650nm
- Output: CLASS II
- Levelling: electronic automatic level
- Self-levelling range: $\pm 4^\circ$
- Accuracy: $\pm 2\text{mm}/10\text{m}$
- Power supply: lion battery or 8pcs AA batteries
- Tripod connection size: 5/8"
- With tilt lock function



ALP-98G:



DSZ-A32 / DSZ-D32 / DSZ-E32
DSZ-J32/ DSZ-J35
Auto level



SPECIFICATIONS

Magnification	35X	32X	28X	24X	20X
Image	Erect image				
Objective aperture	≥42mm	≥42mm	≥42mm	≥42mm	≥42mm
Min. focusing distance	0.5m				
Stadia multiplication constant	100				
Stadia additive constant	0				
Resolution	≤4"	≤4"	≤5"	≤5.6"	≤5.8"
Pattern of reticule	≠			≠	
Working range	±15'				
Compensating error	≤±0.3"/1'				
Setting accuracy	≤±0.5"				
Scale graduation range	360°/400G				
Scale minimum value	1° /1gon				
G0/RE observations error	±2mm/km				
Sensitivity of circular bubble	8'/2mm				
Base screw	M16 or 5/8"x1/11"				
Environmental temperature	-25°C~±50°C				
Weight	2kg				
Carry case	Plastic case (aluminium case for option with extra cost)				
Parallel plate micrometer	Available for option				

LASER SPECIFICATION (jjust for DSZ-J35)

Voltage	Laser safety level	Laser irradiation distance	Wavelength	Electric current	Laser irradiation power
3V	CLASS I	100m	635nm	≤40mA	≤0.39mw

BATTERY



B-01



B-02



B-03



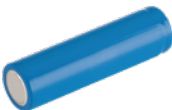
B-04



B-05



B-06



B-07

GLASSES



ADAPTER CABLE



CHARGER



C-01



C-02

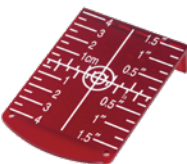


C-03



C-04

TARGET PLATE



BASE



Base-A



Base-B



Base-C



Base-D



Base-E



Base-F



Base-G

RECEIVER



REMOTE



Remote control A



Remote control B

CONNECTOR



WALL MOUNT



Magnetic lift
and wall bracket A



Magnetic lift
and wall bracket B



Magnetic lift
and wall bracket C



Magnetic lift 360



Magnetic lift B



Magnetic lift D



Magnetic lift E



L-mount A



L-mount B



L-mount C



L-mount mini



Wall mount A



Wall mount B



Wall bracket